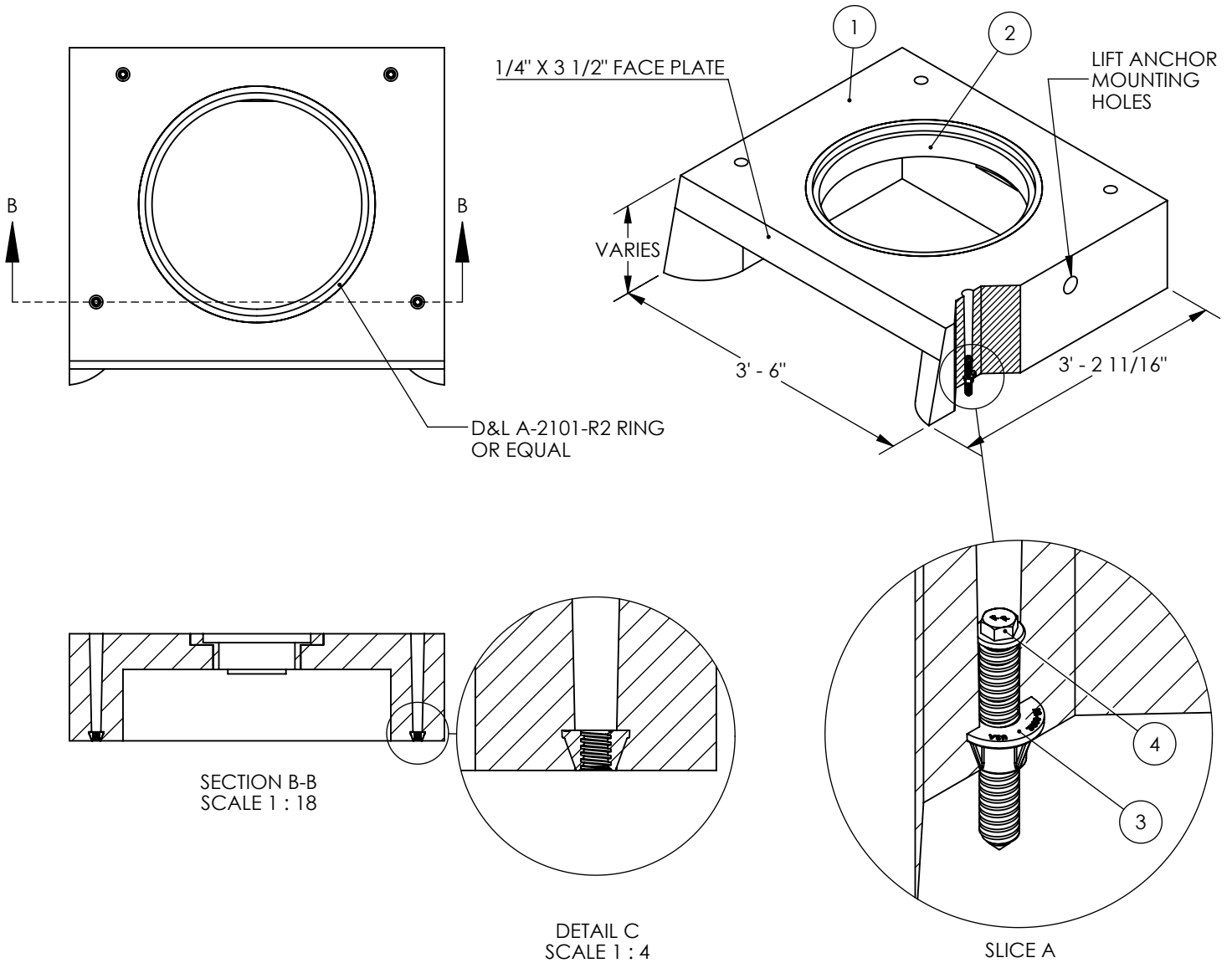



ITEM NO.	PART NUMBER	DESCRIPTION	QTY.
1	ODOT CG-3 INLET	RIMRISER ADJUSTABLE ODOT CG-3 CURB INLET	1
2	A-2101-R2	CAST IN D&L A2101-R2 RING (OR EQUAL)	1
3	RR-0002	3/4" JACK NUT PRECAST INSERT	4
4	RR-0034-5	3/4" X 5" JACK SCREW / 5/8" HEX HEAD	4



NOTES:

1. NO SHIMS REQUIRED. ADJUST SCREWS TO MEET FINISHED GRADE
2. CASTING ASSEMBLY: CASTING ASSEMBLY: PRECAST INLET CONFORMS TO THE REQUIREMENTS OF ASTM C913
3. CASTINGS: GRAY IRON CONFORMS TO ASTM A48 CL35B
4. SCREWS: ZINC-PLATED, MILD STEEL CONFORMS TO ASTM A1018
5. NUTS: ZINC ALLOY CONFORMS TO ASTM C41A
6. GENERALLY, FILL AND PACK GAP BETWEEN FRAME AND SUPPORTING BASE WITH NON-SHRINK GROUT AND FINISH SMOOTH/FLUSH WITH INTERIOR AND EXTERIOR OF ADJOINING SURFACES.
7. USE ONLY GENUINE RIMRISER PARTS OR EQUAL. MADE IN USA.

RIMRISER RESERVES THE RIGHT TO MODIFY OR CHANGE PRODUCT DESIGN OR CONSTRUCTION WITHOUT PRIOR NOTICE AND WITHOUT INCURRING OBLIGATION TO MAKE SIMILAR CHANGES AND MODIFICATIONS TO PRODUCTS PREVIOUSLY OR SUBSEQUENTLY SOLD. SEE YOUR RIMRISER REPRESENTATIVE FOR ANY CLARIFICATION. DIMENSIONS ARE SUBJECT TO MANUFACTURING TOLERANCES. TEL: (360) 833-2277 RIMRISER.COM

 RIMRISER™ 315 N GRAND BLVD, SUITE 100 VANCOUVER, WA 98661	REV.	DATE	APPROVED BY	STANDARD DETAIL ODOT CG-3 ADJUSTABLE CURB INLET		NAME	DATE	
					TITLE	DRAWN BY	SRH	1/24/2023
						APPROVED BY	AMB	1/24/2023
						DETAIL NO. RR-CG-3-ODOT		
						SIZE A	NOT TO SCALE	REV. A